



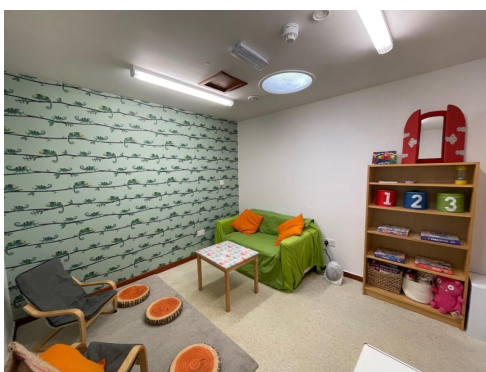
Fritchley CE Primary and Nursery School

September 2022

Welcome back everyone! I hope you have all had a lovely summer break and managed to have lots of family time. The staff have been working hard over the holiday setting up classrooms and preparing exciting lessons for the new term. It has been great to welcome the children back today—there has been a real buzz around school. It has been fabulous!

Chameleon Room

Mr Kimberley has been very busy over the holiday, painting lots of spaces. This is our new nurture/group room which we have named the 'Chameleon Room'. We are confident that this will be a positive, calm place for our children to use.



Drop off and pick up

Please drop-off children between 8:45am and 9am. Children in Hardwick are to be collected at 3:25pm and all other children are to be collected at 3:30pm.

If you travel to school by car, please be courteous to our neighbouring properties. There are parking restrictions around the school site and under no circumstances should any vehicles park directly outside school where the yellow zig-zag markings are.

Buddy Bench

Ms. Baker kindly left a lasting memory for the children in the form of a 'Buddy Bench'. This is a lovely addition to the playground.



PE/Swimming

On PE days, children will now come in their school uniform and change into PE kits during the PE lessons.

Hardwick—Tuesdays and Thursdays

Haddon—Thursdays and Fridays

Wingfield—Mondays and Thursdays

Chatsworth—Monday (Swimming) and Thursdays (PE)

For PE children will need black/navy shorts or jogging bottoms, a plain white t-shirt and some trainers. These can be kept in school on your child's peg. When it is colder, children can either wear their school jumper or bring in a plain navy/black jumper. Please ensure that all items are labelled.

Wider opportunities

Wingfield class will have the wonderful opportunity to learn ukulele this year. Their lessons start on Tuesday 13th September.

Staffing

A new teaching assistant has joined us this term. Mrs. Tannahill will be supporting in Hardwick in the mornings and in Wingfield in the afternoons.

Learn and Achieve Together

Breakfast and After School Club

If you wish to book your child into either breakfast or after school club please could you email club@fritchley.derbyshire.sch.uk in good time so that Ms. Birks and myself are able to organise staffing. We appreciate that when shifts are involved this is a little trickier. If you wish to book in last minute please only message Ms. Birks on Class Dojo. Please do not send messages through Class Dojo to Mrs. Smith or other staff as this is causing extra work and confusion. Breakfast club opens at **7:45am** and closes at **5:45pm**. Please ensure all children are collected by this time.

Collaborative Display

We are creating a whole school display and need your help. The children are all going to be drawing round their hands and decorating them in school. We would like adults at home and in the community to do the same to add to our display. Each year group has a different colour and we would like the community to be **pink**. You can use paint, crayons or felt tips on normal paper. Please send completed hands into school to Mrs. Turner.



Macmillan Coffee Morning

On Monday 26th September we will be hosting a Macmillan Coffee morning at 9:15am. Everyone is welcome and cake donations would be gratefully received. Further details to follow closer to the time.

September	October	November	December
1st,2nd INSET 13th Ukulele starts (Wingfield) 26th Macmillan coffee Morning 9:15am 28th Y5/6 football competition	10th World Mental Health day 10th Y5/6 Sportshall athletics 11th Harvest festival at Fritchley Congregational Chapel 17th Y3/4 Sportshall athletics 18th Messy church 21st Last day 31st Open to pupils	1st, 2nd Parents' evening 14th KS1 Handball competition 28th Y3/4 Handball competition	22nd Last day
January	February	March	April
9th INSET 10th Open to pupils	13th,14th Parents' evening 17th Last day 27th Open to pupils	2nd World Book day 31st Last day	17th INSET 18th Open to pupils
May	June	July	September
1st Bank holiday 8th,9th,10th,11th SATS 26th Last day	5th INSET 6th Open to pupils	17th Reports home 21st Last day	4th INSET 5th Open to pupils

Most mornings I will be at the bottom of the drive welcoming you to school. Please come and introduce yourselves. If you have any questions, concerns or feedback please come and speak to me. On Thursdays and Fridays I will be teaching Wingfield class so may be a little slower to reply but I will get back to you. Mrs. Turner

Learn and Achieve Together